

## 6 day Queenstown Ski Adventure Holiday

Make the most of your Queenstown ski break and add in a few extra iconic attractions including the luge and Shotover jet boat, 6 days you won't forget.

Starts in: Queenstown  
 Finishes in: Queenstown  
 Length: 6days / 5nights  
 Accommodation: Motels  
 Can be customised: Yes

This itinerary can be customised to suit you perfectly. We can add more days, remove days, change accommodations, mix it up, add activities to suit your interests or simply design and create something from scratch. Call us today to get your custom New Zealand itinerary underway.



### Inclusions:

- Includes: Late model rental cars
- Includes: Fully inclusive rental car insurance (excess may apply)
- Includes: Unlimited kms
- Includes: GPS navigation
- Includes: Airport & ferry terminal rental car fees
- Includes: Additional drivers
- Includes: Comprehensive tour pack (detailed itinerary, driving instructions, map/guidebooks, brochures)
- Includes: 24/7 support while touring New Zealand
- Includes: Shuttle transport to the ski field
- Includes: Private airport transfers
- Includes: 2 days Superpass skiing or snowboarding at Queenstown ski fields
- Includes: Shotover jet boat ride
- Includes: Queenstown Skyline Gondola and Luge

## Day 1



### Tour documents and itinerary

Once you touch down in New Zealand your detailed tour pack will be hand delivered by one of our trusted representatives. The pack contains everything you need for the duration of your stay. It will include a comprehensive, printed and bound version of your itinerary as well as clear driving instructions and maps for each leg of your journey. It also contains all the reservation details for your accommodation and activities - along with relevant brochures and information. While in New Zealand we offer 24 hour support - details on how to contact us at any time will be well documented.

---

### Private Transfer Queenstown Airport to your Accommodation

On arrival you will be met by a private driver and delivered to your Queenstown hotel.

---

### Arrive Queenstown and collect your NZSki Mypass from the Snow Centre

Welcome to Queenstown for your winter ski or snowboarding holiday. It's not just the skiing that makes Queenstown a fantastic winter destination, there's also the spectacular scenery, amazing adventures and endless activities to keep you entertained when you're not on the slopes. After each action packed day, you'll also find a superb variety of cafes and restaurants to relax and refuel at. Today we recommend you visit the Snow Centre located on the ground floor of the Station Building at 9 Duke St and collect your mypass card. This will save you heaps of time tomorrow as you'll avoid the morning queues and can head straight to the mountain with more time to ski and ride. When you visit the Snow Centre please take your Ski New Zealand itinerary with you as the Snow Centre staff will need the reference number off this. You will need to pay a \$5 refundable deposit for each mypass card and each person in your group receives their own card. All your lift passes, rental equipment, lessons, shuttle transfers etc will be loaded onto your card. If you're taking the Snowline Hotel Pick-up shuttle to the mountain tomorrow you can also book this at the Snow Centre.

---

### Your accommodation: Blue Peaks Lodge

Blue Peaks Lodge offers well equipped self contained rooms with a fantastic location overlooking Queenstown and is just an easy five minutes walk to the Queenstown lakefront.



## Day 2



### Transport options from Queenstown to Ski Fields

#### Coronet Peak

Driving - From Queenstown it's a 20 minute drive to Coronet Peak Ski Area. From the centre of town it's well sign-posted to Coronet Peak, approximately 13km out of town. The road to the ski field is a sealed alpine road, snow chains must be carried. Shuttles - There are regular return Snowline Express buses that depart from Queenstown for Coronet Peak or you can reserve a pick up from your hotel in the morning. Remarkables

Driving - From Queenstown it's a 40 minute drive to the Remarkables Ski Area. From the centre of town drive towards the airport, then continue over the Kawarau River and continue on the main road until you see the well signposted entry for the Remarkables Ski Area Access Road. The road to the ski field is a sealed 14 km alpine road, snow chains must be carried. Shuttles - There are regular return Snowline Express buses that depart from Queenstown for the Remarkables or you can reserve a pick up from your hotel in the morning. Cardrona

Driving - From Queenstown it's a 50 minute drive to Cardrona Ski Area. Follow State Highway 6 from Queenstown towards Wanaka, just after Arrowtown turn left onto the Crown Range Road and travel over the pass, after passing through Cardrona village the clearly marked entrance to Cardrona Ski Area is on your left. The ski field access road is an unsealed alpine road, snow chains must be carried. Shuttles - Kiwi Discovery buses have two morning departures from a range of Queenstown locations to Cardrona, buses return at 4.15pm

---

## NZSki Snowline Bus: Hotel Pick Up and Return Pass

Relax and enjoy the scenic journey to and from Coronet Peak or The Remarkables aboard one of the dedicated buses. NZSki Snowline provides a return trip from your Hotel to the slopes every day of the season (weather and conditions permitting), giving you a comfortable and safe alternative for getting to the snow. No need to bother with chains or road conditions, instead you can sit back and rest up in preparation for your active day ahead and enjoy the incredible views.

---

## NZSki Queenstown Superpass: 2 Day Lift Pass

The Queenstown Superpass is the most flexible lift pass in the Southern Lakes, giving you access to ski and ride Queenstown's closest mountains – Coronet Peak and The Remarkables. Get more choice, more fun and more snow time with your Queenstown Superpass and make the most of your New Zealand holiday!

With 2 days of Queenstown Superpasses you've got lift access to New Zealand's premier ski areas plus the fun and excitement of a range of off mountain attractions in and around Queenstown. You can mix it up a little and ski a day at the Remarkables and a day at Coronet Peak, or maybe you've got your eye on a run that you want to conquer over 2 days. And remember if the weather doesn't play ball on one of your days you can always exchange one of your superpass days for an exciting off-mountain activity or towards a feast at your favourite Queenstown restaurant or cafe.

---

## Coronet Peak Ski Field

Want to challenge yourself on exciting terrain in some of the best conditions in the Southern Hemisphere? Then Coronet Peak should be top of your list. This theme park created by mother nature offers gripping trails and the extensive snowmaking facilities, makes for complete snow coverage on multiple trails. Coronet is also home to night skiing for a different take on these roller coaster trails try it under lights. For those just getting to know the snow the dedicated learner and novice areas make finding your snow feet easy and all gear can be hired on the mountain. With 25% beginners, 45% intermediate and 30% advanced, Coronet Peak has the trail for you. For a break from the snow, enjoy live music at the base building, or wet your whistle with a hot chocolate or cold beverage at Heidi's Hut. The pizza and pasta meals are great for warming you up and giving you an energy boost for the afternoon. For the little ones there are supervised kids' programmes for 3 months upwards and snow sport school for kids and big kids alike. There are regular shuttles to and from Queenstown, which is only a 20 minute drive away.

---

## Your accommodation: Blue Peaks Lodge

Blue Peaks Lodge offers well equipped self contained rooms with a fantastic location overlooking Queenstown and is just an easy five minutes walk to the Queenstown lakefront.



## Day 3



## Explore Queenstown and surrounds

Although celebrated as New Zealand's 'adventure capital' Queenstown offers far more than a fast paced action-packed holiday. Settled on the shores of Lake Wakatipu beneath a soaring panorama of the Remarkables Mountain Range, this alpine town is surrounded by a plethora of historic, gastronomic and scenic wonders.

Head down the Gibbston Valley wine trail to sample some of the region's best Pinot or catch a ride on the 100 year old Steamship - the TSS Earnslaw - to Walter Peak Station for dinner and a farm tour. Browse the waterfront cafes and have lunch at Michelin star chef Josh Emmett's 'Rata'. Check out nearby historic Arrowtown and enhance your experience with a four wheel drive trip to Macetown.

Take a leisurely lakeside stroll or ride the gondola for breathtaking views. Venture further afield into the Fiordland National Park or head over the Crown Range to Wanaka. Drive through Lord Of The Rings country - or for the really fanatic, jump aboard one of many dedicated LOTR tours. And after all of that - if you do really want the adrenaline rush Queenstown is known for, take your pick from the Shotover Jet, Nevis Bungy, Canyon Swing, Zipline, Luge or Heli-ski.

---

## Skyline Gondola Queenstown and 3 Luge Rides

In the heart of Queenstown, located 450 metres above town in the Ben Lomond Scenic Reserve is the Skyline Complex. A gondola ride to the summit makes for awe-inspiring views of the city surround. Arrive at the complex and wander the outside viewing decks for a picture perfect outlook. Then onto the Luge! The 800 metre luge track offers an exhilarating journey through banked corners, tunnels and dippers.

---

## Shotover Canyon River Jet Boat Adventure

Riding the iconic 'Big Red' Jet Boat through the narrow Shotover Canyon is an exhilarating experience not to be missed. Your skilled jet boat driver pushes the boat to 85 kph, skimming across shallow water and past towering canyon walls. This 25 minute white water ride includes 360 degree spins and maximum thrills.

---

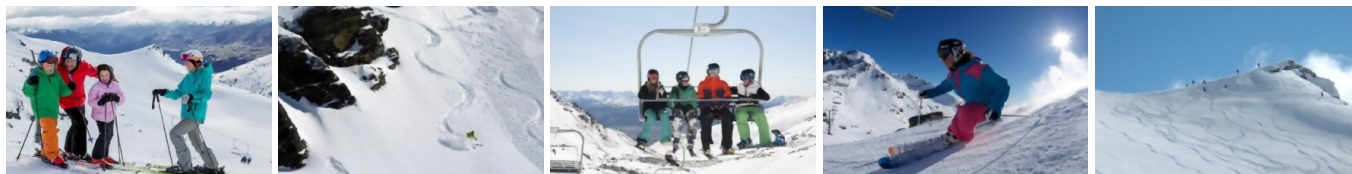
### Your accommodation: Blue Peaks Lodge

Blue Peaks Lodge offers well equipped self contained rooms with a fantastic location overlooking Queenstown and is just an easy five minutes walk to the Queenstown lakefront.



---

## Day 4



### NZSki Snowline Bus: Hotel Pick Up and Return Pass

Relax and enjoy the scenic journey to and from Coronet Peak or The Remarkables aboard one of the dedicated buses. NZSki Snowline provides a return trip from your Hotel to the slopes every day of the season (weather and conditions permitting), giving you a comfortable and safe alternative for getting to the snow. No need to bother with chains or road conditions, instead you can sit back and rest up in preparation for your active day ahead and enjoy the incredible views.

---

### The Remarkables Ski Field

The Remarkables offers a laid-back atmosphere which is fantastic for families and those new to skiing or snowboarding. Located just 45 minutes from Queenstown, the Remarkables features a fantastic network of trails with wide, gentle slopes for beginners of all ages and big mountain runs for the experts in the family. With 30% beginners, 40% intermediate and 30% advanced, the Remarkables offers challenges for all levels and for those wanting to progress quickly, the friendly team of instructors can be with you every step of the way. While you're up there don't forget to check out the purpose-built snow tubing lanes before you round off with a steaming hot chocolate or drink at Remarkables cafe. With regular shuttles from Queenstown, childcare for 3 months onwards and lessons for 3yrs+ and complete gear hire on the mountain, this is a fun and easy day out for visitors to the South Island.

---

### Your accommodation: Blue Peaks Lodge

Blue Peaks Lodge offers well equipped self contained rooms with a fantastic location overlooking Queenstown and is just an easy five minutes walk to the Queenstown lakefront.



---

## Day 5



## Enjoy a second day in Queenstown

With such an abundance of activities on offer, one day in Queenstown is never enough! Today you'll have some spare time for those things you didn't get to do yesterday. For more thrills you can choose from jet boating, lugging, bungy jumping or a canyon swing. If golf is your game, the exceptional Millbrook Golf Course is the place for you. Explore a little further afield - nearby historic gold mining township Arrowtown, is a popular destination and features many original buildings and features. At the head of Lake Wakatipu sits Glenorchy, the scenic drive here is worth the trip alone, however arriving into this peaceful township you could easily rest the day away. Nearby is the start of the Routeburn Track, one of New Zealand's Great Walks. You can enjoy a section of this track as a day walk or for the ultimate wilderness adventure choose the 3 day all-inclusive fully guided option. To really appreciate the natural beauty that surrounds this area, a scenic flight or hot air balloon ride will take your breath away. For a slightly more grounded experience, the Skyline Gondola offers fantastic views of Queenstown and the Remarkables.

---

### Your accommodation: Blue Peaks Lodge

Blue Peaks Lodge offers well equipped self contained rooms with a fantastic location overlooking Queenstown and is just an easy five minutes walk to the Queenstown lakefront.



---

## Day 6

### Private Transfer Queenstown Accommodation to Airport (LSQ)

You will be collected from your hotel and transferred to Queenstown airport to meet your flight.

---

---

## Tour details

Departures:	Daily
Tour type:	Self Drive Tour through the South Island NZ
Starts:	Queenstown
Finishes:	Queenstown
Tour length:	6
Accommodation:	Motels
Car/transport type:	

---

## Included activities

Includes	Shuttle transport to the ski field
Includes	Private airport transfers
Includes	2 days Superpass skiing or snowboarding at Queenstown ski fields
Includes	Shotover jet boat ride
Includes	Queenstown Skyline Gondola and Luge

---

## Accommodation summary

Day 1	Blue Peaks Lodge
Day 2	Blue Peaks Lodge
Day 3	Blue Peaks Lodge
Day 4	Blue Peaks Lodge
Day 5	Blue Peaks Lodge